



S100 Temperature Switches

Application

The COLM (COntec Level Measurement) S100 Series of temperature switches are designed to meet customer specific applications. They are available in a selection of body styles, connector configurations, switching temperatures and senses, i.e. normally open, normally closed or changeover. This range of products has been designed and engineered to be rugged and durable, and capable of extensive service in demanding environments.

Suitable for use on many types of industrial engines, the S100 Series can withstand significant levels of vibration, shock, temperature and humidity.



Specifications

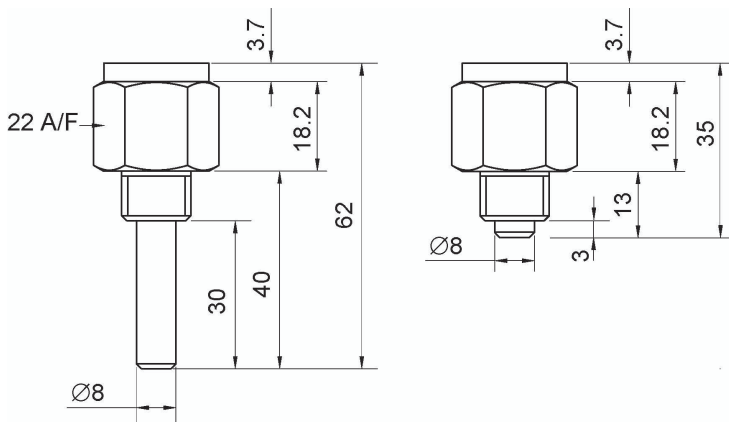
Threads: 1/2" NPTF, 3/8" NPTF, 1/2" BSPT, 3/8" BSPT, 5/8" UNF, M14 or M18. Other thread sizes and body designs are available.

Electrical rating

Max. Switching Current: 1 A
Max. Switch Operations: 100.000
Switching Temperature: Within -20 °C to +140 °C range
Sence: N/O or N/C
Differential: 8 °C below 100 °C / 10 °C above 100 °C
Accuracy: ±3 °C

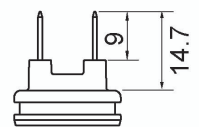
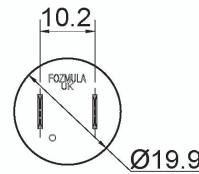
Environmental Ratings

Service Temperature: -20 °C to +140 °C
Vibration: 15.3 Grms in acc. with BSEN 60068-2-64:1993

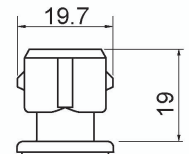
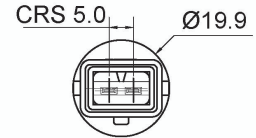


Construction

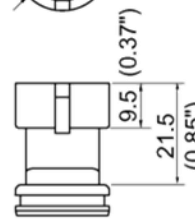
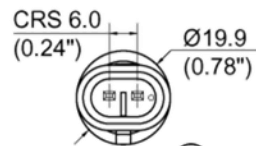
Body: Brass CZ121/131
Connector: 30% Glass Filled PBT
Terminals: Brass CZ108 with silver or nickel plated. Gold plating also available.
Flying Leads: XLPE



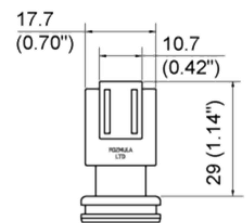
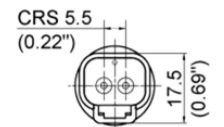
TWIN ¼" SPADES TOP MOULDING CONNECTOR
S101



2 WAY AMP JUNIOR TIMER CONNECTOR
S102



2 WAY PACKARD METRI-PACK 150 SERIES CONNECTOR
S103



2 WAY DEUTSCH CONNECTOR
S104